



TOCSIN 635 SERIES

Advanced Addressable 2-Wire Gas Detection System

The TOC-635 system controller From IGD uses the latest Sentinel+ ® digitally addressable technology. Specifically designed for gas detection systems Sentinel+ ® combines fast reliable response, data security and easy to use error proof features for the system you need.

- ▶ Easy to Install, Just One Cable For all Connected Devices
- ▶ One Click Setup, FIND devices and automatically Configure Your Controller
- ▶ One 2 Core Cable Connects all Devices for Power & Communication. No Polarity Requirement, Super Easy. Minimise Cabling Maximise Cover.
- ▶ Auto-Update. Change a Sensor or Sensor Type, its Auto Detected and Updated on the System
- ▶ Designed & Manufactured in the UK, Backed with 10 Year Manufacturers Limited Warranty



Control Panel

Product Data

Document Ref: T635M V3

THE POWER OF

One 2 Core Cable - Everything Connected

IGD

TOCSIN 635 SERIES

Advanced Addressable 2-Wire Gas Detection System

Sentinel + ® is an advanced digitally communicating gas detection system from IGD. The system provides fast efficient error free performance specifically designed to meet the unique requirements posed by gas detection hazards. The system provides ultimate flexibility to link you gas detection system to provide alarms, interface to plant shut down hardware and communicate clearly to BMS and similar systems. 2 Core cabling for both power and communication with no polarity requirement means cabling is minimised, reducing system costs with no compromise.

FEATURES

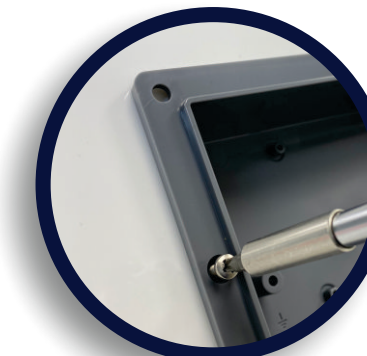


One Touch Set up Wizard

Automatically Detect And Install System

Clear Audible and Visual Alarms

Assignable LED's Clearly Show Where the Alarm is.



Flush or Rear Mount

Top or Bottom or Rear Cable entries

Built in Slam Switch Alarm.

All Your Interfaces in One Place



One 2-Core Cable Run Many Possibilities



OPTIONS

Safe Area Detectors
ATEX Detectors
Control Cards
Room Status Indicators
Sampling Gas Detectors
Audible Visual Alarms
Illuminated Signs



THE POWER OF 2

One 2 Core Cable - Everything Connected



Advanced Addressable 2-Wire Gas Detection System

One single 2 core cable with no required connection polarity connects all system devices. Auto FIND, Auto Configure and Auto update combined with downloadable status reports are just some of the features to give the peace of mind you have the right system doing the right job to protect your plant and personnel.

OPTIONS	SAFE AREA	ATEX	SAMPLER	RSI
---------	-----------	------	---------	-----

Sensor I/P Toxic, IR, PID	1	1	2	N
Sensor I/P Pellistor	1	1	1	1
4-20mA I/P *	2	2 [†]	N	2
Digital I/P *	2	2 [†]	N	2
Counter I/P *	2	2 [†]	N	2
Relay O/P *	2	2 [†]	N	1
Digital O/P *	2	2 [†]	4	2
2 x 8 Display	1	1	N	1
Sounder	1	N	N	1
Estop	1	N	N	1
Key Switch	1	N	1	1

KEY

- Room Status Indicator
- Control Relay
- mA Input Signal
- Beacon - Sounder
- Digital Input
- E-Stop / Break Glass / Call Point

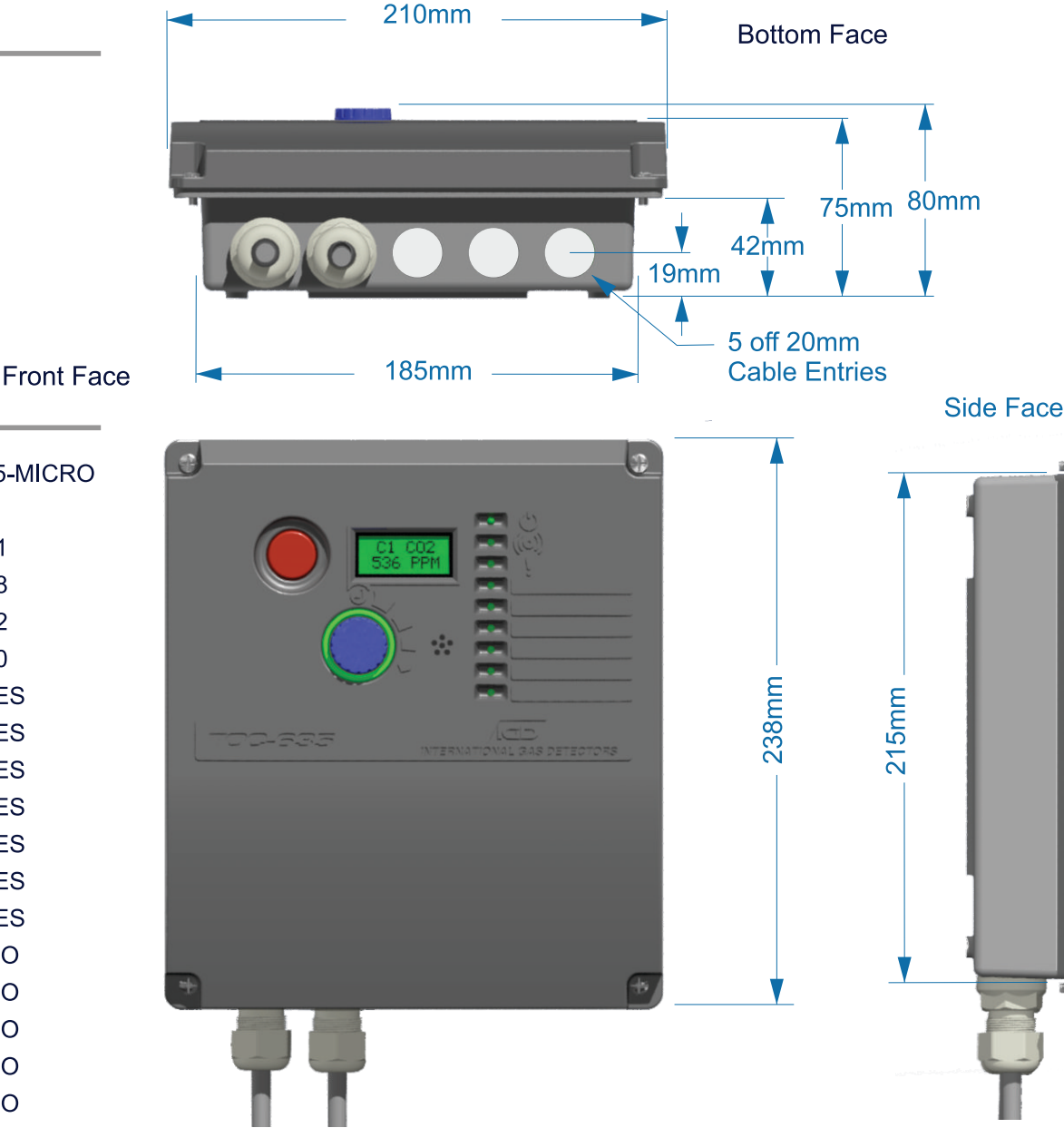
- [†] In order to utilise this option a break out junction box is required.
- ^{*} 2 Multi-Function I/O Ports. Option Selectable in Any Combination
- 1** Number available per a detector.



SPECIFICATIONS

Power	230V AC 50Hz 50W	Other I/O	Sounder 85dB @ 300mm (Mutable) 1 off RS485 Port Modbus in/out (PLUS only) 2 off Multi-Function Inputs mA or Digital (PLUS only) 6 User Defined Alarm Indication LEDs Illuminated RGB Light Ring, Alarm, Fault, Menu etc
Construction	ABS		
Display	2 Lines x 8 Digit LCD Display Multi-Colour Backlight (Red-Alarm, Yellow-Fault, Blue-Normal)	Inputs	Up to 8 or 32 off Addressable Series Detectors or I/O Modules see feature table
User	IGD Jog Wheel Option Select, Alarm Reset, RGB		Note external Booster PSU may be required
Outputs	3 off SPCO Relays 4A Non-Inductive User Configurable 1 off Fault Relay SPCO Relays 4A Non-Inductive 1 off Solid State Beacon Sounder Output Additional Digital Inputs/Relay Outputs Can Be Added To Highways if Required see feature table for model differences	Temperature	-20 to +55 Deg C Full Specification. To 55 Deg C De-Rate PSU by 15%
		Humidity	20-90% RH Non-Condensing
		Sealing	IP54
		Mounting	Wall Mount
		Weight	1.2Kg

DIMENSIONS

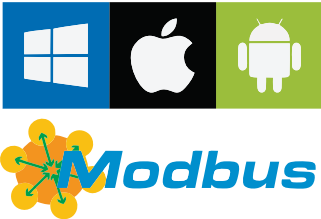


FEATURES

	TOC-635-PLUS	TOC-635-MICRO
Detector Ports	1	1
Supported Detectors/Modules	32	8
On-Board relays	4	2
Digital Inputs	2	0
WiFi Connectivity	YES	YES
Real Time Clock	YES	YES
RGB Display	YES	YES
Illuminated RGB Menu Wheel	YES	YES
6 Assignable Alarm LEDs	YES	YES
Sounder	YES	YES
Event Log Report	YES	YES
Beacon Sounder Output Port	YES	NO
Modbus Connectivity	YES	NO
Battery Backup Port	YES	NO
System Status Report	YES	NO
Calibration Status Report	YES	NO

ORDER CODES

Part Number	Description
TOC-635-PLUS	230V AC Control Panel 50W PSU Standard Features including 2 x 8 RGB Display and Jog Wheel 4 Relays, 1 Highway, 32 Devices
TOC-635-MICRO	24V DC Control Panel Standard Features including 2 x 8 RGB Display and Jog Wheel 2 Relays, 1 Highway, 8 Devices
TOC-635-BAT	External Battery Module 2 x 1.2Ah Batteries 0.5M Connection Cable
TOC-750-BAT1	110/230V AC Power Module 300W PSU 5AH Battery Backup NOTE: Use with 24V DC Version Tocsin 650/750
TOC-750-BAT2	110/230V AC Power Module 300W PSU 17AH Battery Backup NOTE: Use with 24V DC Version Tocsin 650/750
TOC-750-BAT3	Booster Module With Battery Backup 5AH Battery Capacity 24V DC PSU at 150W
TOC-750-BAT4	Booster Module 24V DC PSU at 150W
TOC-750-IO2	Expansion I/O Card 8 Relay Outputs 10 Digital/Analogue Ports
FB-BX-1	Field Accessory Box Fits 2 Expansion Cards (TOC-750-IO2)



[Ex Gb] IIC

CABLES

Installation Cables

Supported Installation Cables 2 Core 1.5mmSQ or 2.5mmSQ See IGD Cable System Calculator

Typically SWA, MICC, FP200, SY, CY Screened or Similar



International Gas Detectors

EC Declaration of Conformity

Declares that the product listed as:

TOCSIN 635

Addressable Gas Detection Control Panel

Issuers name and address:

Oliver IGD Limited of
Triton House
Crosby St,
Stockport,
SK2 6SH
United Kingdom

Are in conformity with the provisions of the following European Directive(s) when installed, operated, serviced and maintained in accordance with the installation and operating instructions contained in the product documentation.

2004/108/EC
2014/35/EU

EMC Directive

Low Voltage Equipment Directive (note not applicable to 24V DC Powered Versions)

And that the standards and/or technical specifications referenced below have been applied or considered.

IEC 60079-0:2017 7th Ed	Explosive Atmospheres Equipment General Requirements
IEC 60079-29-1:2016 2nd Ed	Explosive Atmospheres. Gas Detectors. Performance Requirements of Defectors for Flammable Gases.
EN 50270	Electromagnetic compatibility - Electrical Equipment for the Detection and Measurement of Combustible Gases, toxic Gases or Oxygen
IEC 60529	Degree of Protection to IP54
EN 60068-2-6	Vibration
EN 50271	Electrical apparatus for the detection and measurement of combustible gases, toxic gases or oxygen. Requirements and tests for apparatus using software and/or digital technologies
EN 60335:2012+A11:2014	Electrical Safety

Technical File Reference

T650-TF9

Oliver IGD Limited Operate an
Independently assessed ATEX/IECEX
QAN.

Quality Assurance Certificate Number
16PQAN0014

Quality Assurance Notification Number:
2585



Units 16-18 Abenbury Way,
Wrexham Industrial Estate,
Wrexham, LL13 9UZ
United Kingdom



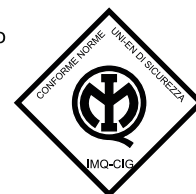
Oliver IGD Limited operate an independently
assessed ISO9001:2015 Quality Management and
ISO14001:2015 Environmental Management System

Certificate Numbers
FS0646773 & EMS696504

BSI Assurance UK LTD,
London, W4 4AL
United Kingdom



IMQ S.p.A con Socio Unico
Via Quintiliano 43
Italia 20138 Milano
www.imq.it



[Ex Gb] IIC

Report Ref AT19-0036585-01

Issued by: Oliver IGD Limited, Stockport, SK2 6SH , United Kingdom

Signature:

Declaration of Conformity in accordance with EN ISO/IEC 17050-1:2010

Name: Andrew J Collier M.I.O.D
Position: Managing Director

Date: 17 Feb 2020

Declaration Ref: T650-DEC-6

Document Ref: T635M V3



**INVESTORS
IN PEOPLE**



internationalgasdetectors.com
+44 (0)161 483 1415
sales@internationalgasdetectors.com
/international-gas-detectors-ltd

Triton House
Crosby Street
Stockport
SK2 6SH