

- Power Supply:

12 to 28V DC 4W
- Environmental:

0 to +55 Degrees Centigrade
0-95%RH Non-condensing
Terminal Enclosure IP54 Cable Glands Must be used
- Response Time:

<30 Seconds
- Nominal Alarm Levels:

See preset alarm levels Relay Active SPCO 5A @ 230V AC Non inductive
- Expected Life:

5 Years, no user replaceable parts
- Target Gas:

See cover markings as CO, CO2, O2, LPG, CH4
- Service:

This equipment must only be serviced by competent persons and checked periodically using traceable calibration gases. Do not test using lighter fuel or similar fuel gases as this can give misleading results. In extreme cases this can result in sensor damage.
- Standards Applied:

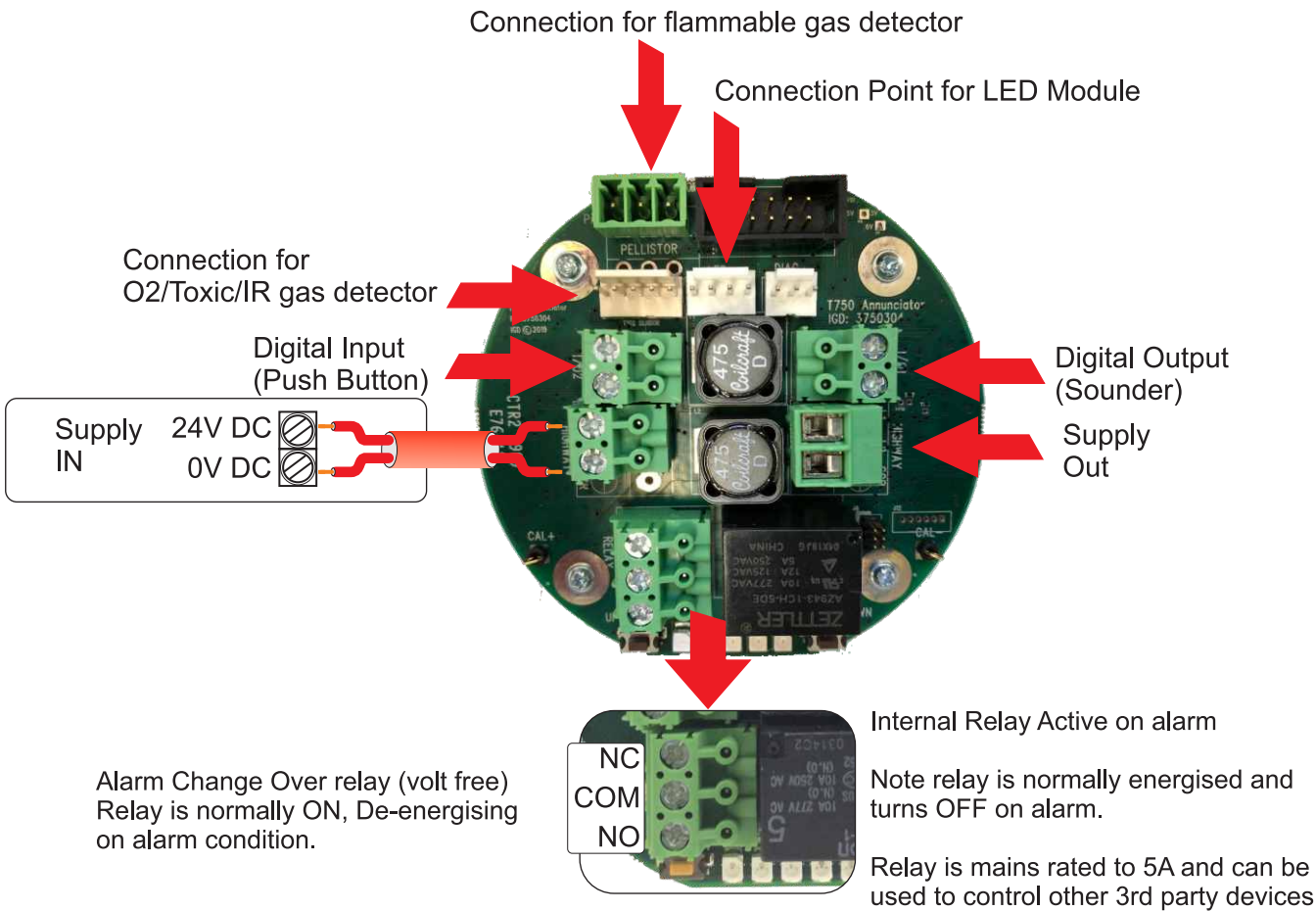
EN50194-1:2009 Type A Equipment (Flammable Gas Detectors)
EN60335-1:2002 EN50270
- Cabling:

When using stranded cable fit bootlace ferrules to
Prevent stray wire strands shorting

Installation of this device when connecting to a mains power supply should only be made by a competent person. The unit is supplied pre-calibrated. Clean only using a damp cloth, DO NOT USE CLEANING PRODUCTS.

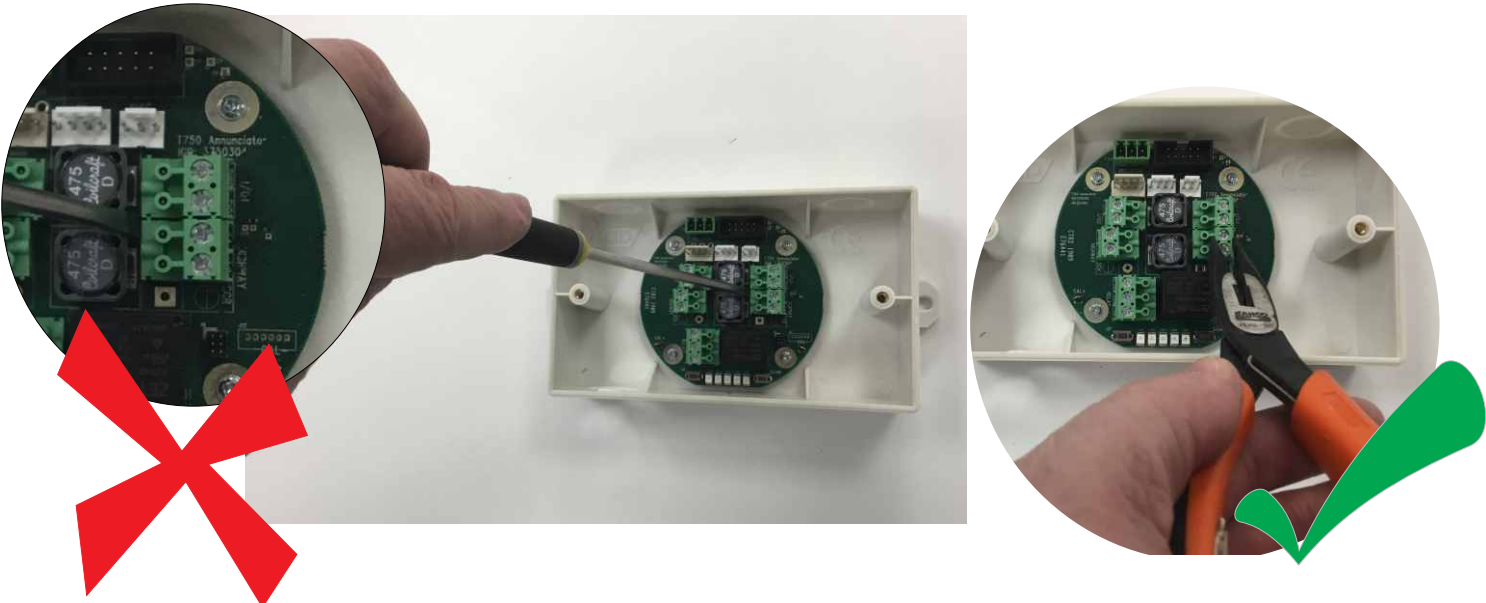
Do not tamper with this equipment. To do so may cause incorrect operation or risk electric shock.

Internal Terminal Functions



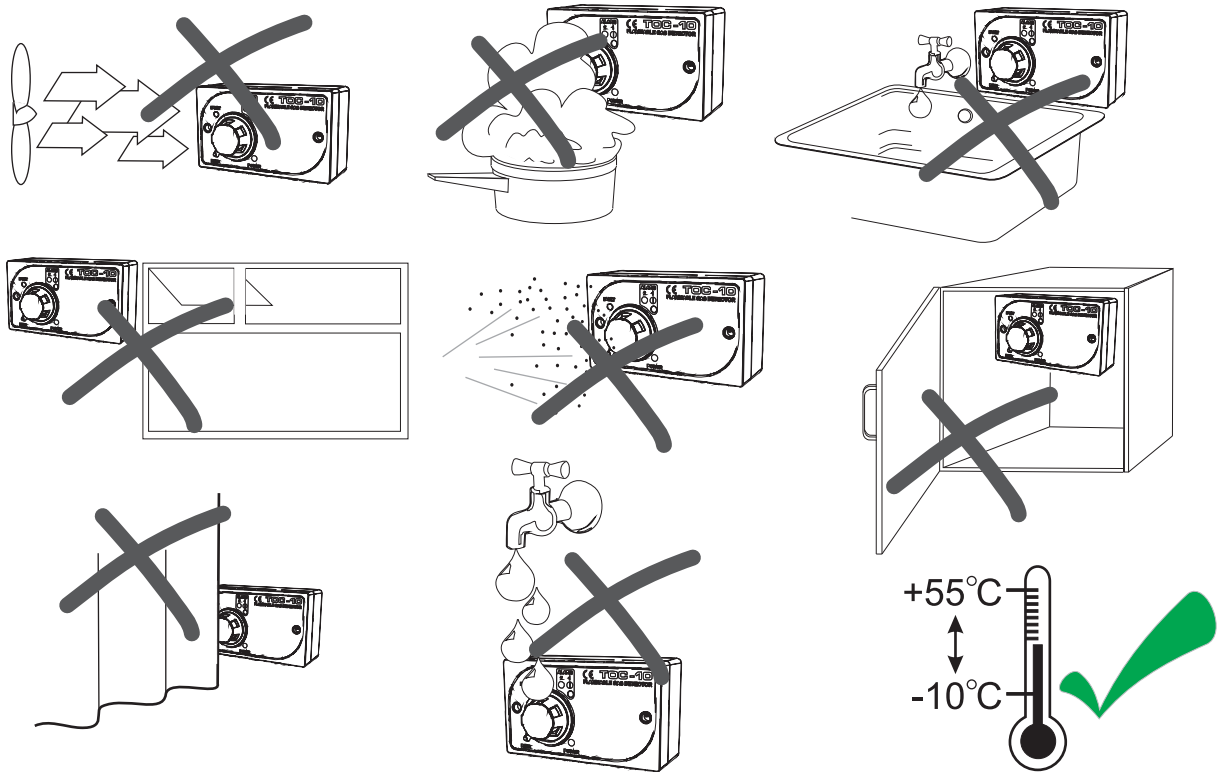
NOTE: The unit is shipped configured and Pre-Calibrated for its detector and options and alarm levels

Main Base PCB Connectors



When unplugging detectors from the main PCB DO NOT lever them off. This will potentially cause damage to the PCB and/or connector mating parts and invalidate any warranty. If it is necessary to remove the PCB connectors use long nose pliers.

Locating the Detector



The TOC-750 Flammable gas detector is factory calibrated for its target gas. The target gas is indicated on the product (i.e CH4, LPG etc). The TOC-750 will respond to any flammable gas but can only be calibrated to be correct response to one. The following list indicates common materials that may also cause a response in operation:

- Aerosol propellants (Butane)
- Paint solvents (VOC's)
- Hot vaporised cooking oils
- Solvent based adhesives (VOC's)

Some commonly occurring substances may cause long term detector damage, typically:

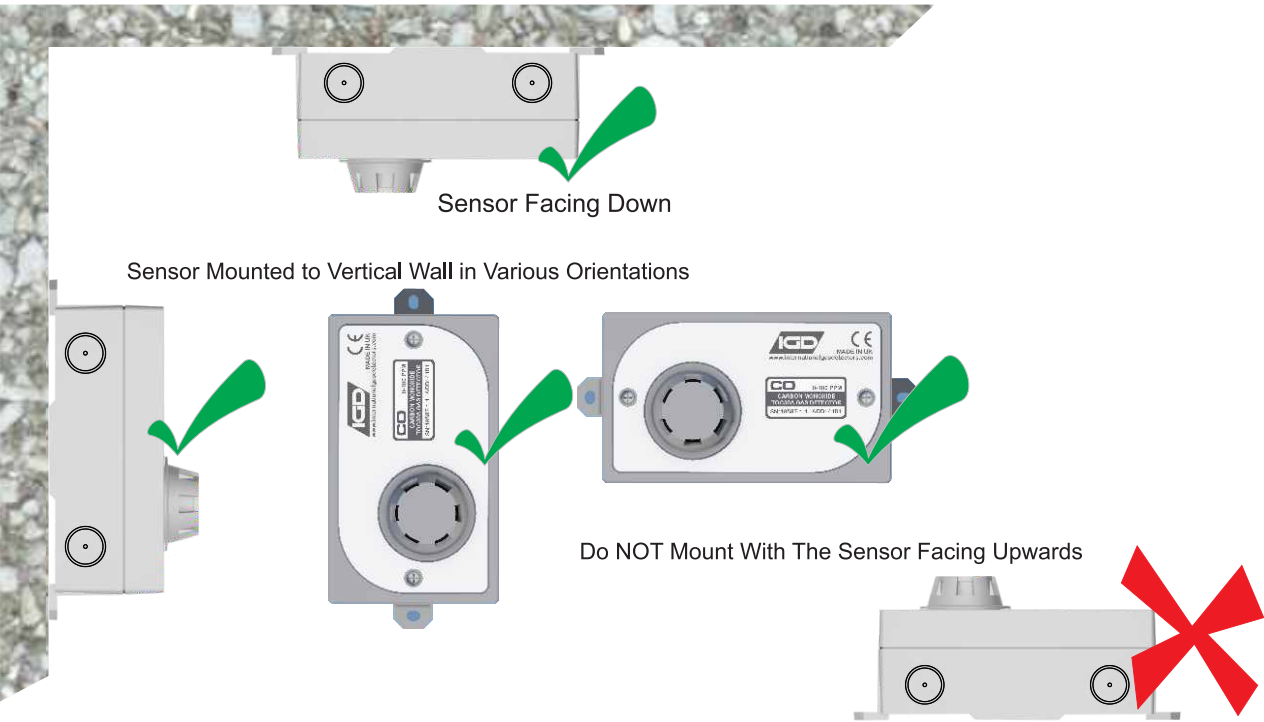
- Silicones (furniture polishes etc)
- Hair sprays (silicones, VOC's etc)
- Chlorinated cleaning agents

Detectors in Airflows Mounting Positions Safe Area (BS EN 50194)

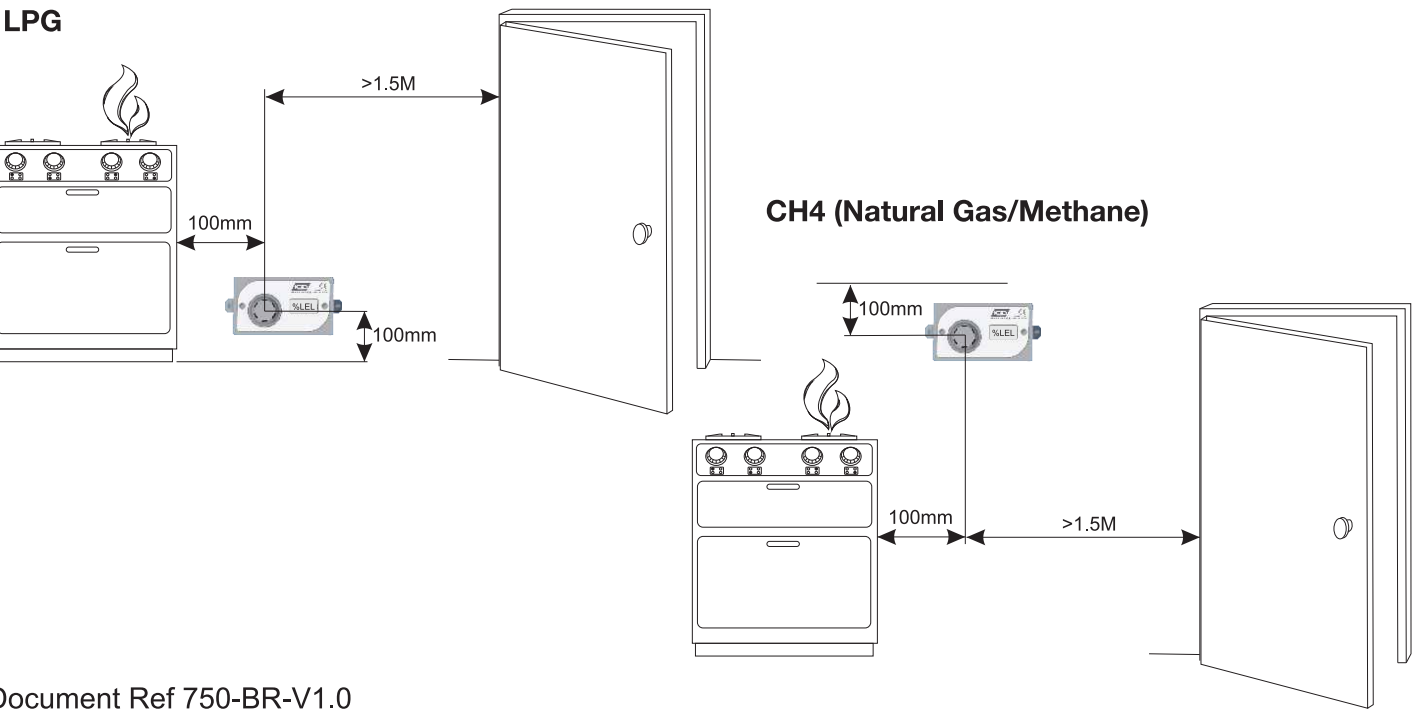
Air Flows up to 1M/S Are Allowable Without Any Performance Issue



General Detector Mounting Positions Safe Area (BS EN 50194)

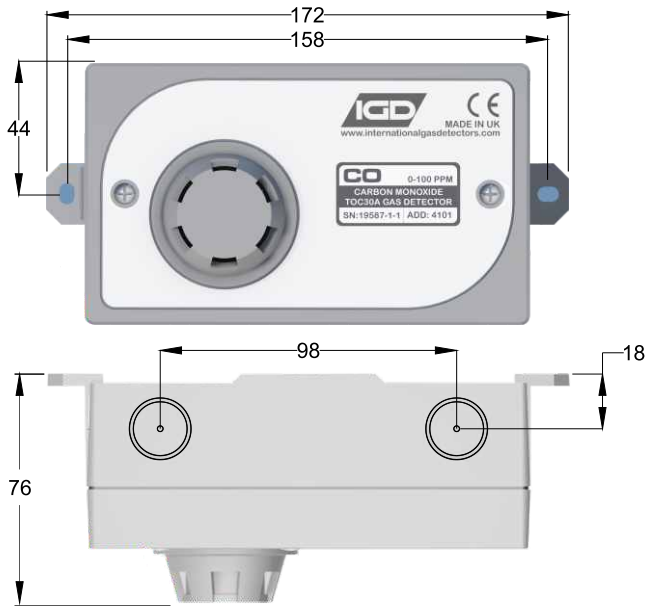


Mounting Locations For Flammable Gas Detectors



TOC-750BR Gas detector

Physical



Model ID	Nominal Alarm Point	Type
TOC-750BR-O2	19.5%	Falling Level
TOC-750BR-CO2	4500ppm	Rising Level
TOC-750BR-CO	20ppm	Rising Level
TOC-750BR-FL	10% LEL	Rising Level

All Alarms Auto-Reset

Amber Fault LED Call for Service if illuminated

Red Alarm LED Active on Alarm

Install Beacon Sounder to Protect Door Entries

Press for more than 5s when NOT in alarm for an alarm test

Green Power LED Flashes During Warm up

Typical Detector Mounting Heights!

CH4 Ceiling Height

CO
CO2
O2 } 1000 - 1200 from Floor Level

LPG 300mm From Floor Level

DO NOT
TURN
OFF

Install to plug socket and fit label to indicate NOT to turn off socket

Note: 750BR Versions are supplied Pre-Wired and Pre-calibrated ready for use. Alternate Power supplies are available for permanent installation if required. Equipment should be installed by a competent person who has read and understood this instruction manual.



International Gas Detectors
Stockport SK2 6SH UK

